

1. Name

Insulation for surface heating Capricorn **EPS-100**

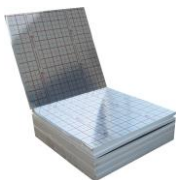
2. Product characteristics and intended use

Insulation for floor heating **EPS-100** is ready to install insulation boards intended for under-screed floor heating installations. EPS-100 ensures perfect thermal insulation and minimizes heat loss. High performance of EPS-100 optimizes load acting on floor of households and public buildings without compromising interior design.

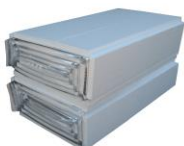
3. Codes

Code	Type	Insulation thickness [mm]
9-1610-020-61-21-00	Insulation for surface heating EPS-100 Duo	20
9-1610-025-61-21-00		25
9-1610-030-61-21-00		30
9-1610-050-61-21-00		50
9-1610-020-62-21-00	Insulation for surface heating EPS-100 Cube	20
9-1610-025-62-21-00		25
9-1610-030-62-21-00		30

4. Packaging



Insulation for floor heating **EPS-100 Duo** is offered in the form of 21nm x 11nm boards, double folded, combined foil, bulk packaging of 10 m² (5 boards 2 m² each).



Insulation for floor heating **EPS-100 Cube** is offered in the form of 51nm x 11nm boards, folded into a quadratic prism for easier transportation, bulk packaging of 10 m² (2 boards 5 m² each, connected with foil).

5. Logistic Data

Product Code	Unit packaging		Cargo for vehicle of capacity of 120m ³			Cargo for vehicle of capacity of 40m ³			Cargo for vehicle of capacity of 20m ³		
	Number of boards per package	Number of m ² per package	Number of packages	Number of m ²	Number of m ³	Number of packages	Number of m ²	Number of m ³	Number of packages	Number of m ²	Number of m ³
9-1610-020-61-21-00	5	10	390	3900	100	144	1440	36	64	640	16
9-1610-025-61-21-00	5	10	390	3900	100	144	1440	36	64	640	16
9-1610-030-61-21-00	5	10	330	3300	100	120	1200	36	53	533	16
9-1610-050-61-21-00	5	10	180	1800	100	72	720	36	32	320	16
9-1610-020-62-21-00	2	10	375	338	105	129	1286	36	57	571	16
9-1610-025-62-21-00	2	10	375	3380	105	129	1286	36	57	571	16
9-1610-030-62-21-00	2	10	318	2900	105	109	1091	36	48	485	16

6. Structure and Materials Used

Insulation for surface heating **EPS-100** is composed of expanded polystyrene; it is also composed of a 0.07-mm thick vapour insulation metallised foil, being an advanced double-layer laminate made of BOPP20 (metallised biaxial oriented polypropylene) and of LDPE80 (low-density polyethylene) and bearing an interlayer overprint in the form of solid and broken lines forming 10-cm side squares, which facilitates the heating system installation. BOPP and LDPE are combined with a very mechanically resilient two-constituent polyurethane adhesive.

7. Technical Specification

Type	Board dimensions thickness x width x length [mm]	Board surface [m ²]	Thermal conductivity declared [W/(m·K)]	Heat resistance [(m ² · K)/W]	Value of the compressive stress at 10% deformation [kPa]	Level of bending properties [kPa]	Reaction to fire [Euroclass]
Duo	20X1000X2000	2,0	≤0,036	0,55	≥100	≥150	E
	25x1000x2000			0,65			
	30x1000x2000			0,80			
	50x1000x2000			1,35			
Cube	20X1000X5000	5,0	≤0,036	0,55	≥100	≥150	E
	25x1000x5000			0,65			
	30x1000x5000			0,80			

8. Standards

- **PN-EN 13163:2012** Thermal insulating construction products. Factory made products of expanded polystyrene (EPS).

9. Advantages

- efficient thermal insulation, heat losses reduced,
- insulation boards are ready-to-install, which considerably speeds up installation of surface cooling and heating systems,
- efficient thermal insulation minimises heat losses through floor and provides high heating comfort,
- insulation layer is wrapped with vapour insulation metallised foil with raster bitmap overprint facilitating arrangement of heating pipes,
- 5-cm wide foil overlaps ensure sealing protection against penetration of jointless floor make-up water and humidity into foamed polystyrene,
- use of very resilient adhesive ensures simple, fast and trouble-free installation.

10. Warranty and responsibilities

During the installation it is required to observe OHS rules included in building regulations and norms. Capricorn S.A. More information about warranty and extent of liability on www.capricorn.pl/en

11. Manufacturer

Capricorn S.A.

58-160 Świebodzice,

Ciernie 11

tel./fax +48/74/854 05 16

www.capricorn.pl/en

e-mail: capricorn@capricorn.pl

Products, texts, pictures, drawings and diagrams presented in this document may be changed by Capricorn S.A. without prior notification and without giving a reason. Please visit our web site www.capricorn.pl/en for more detail.